

**Notice of Race**  
CYC High-Water Series  
CYC Fleet Champions

- 1) General information. General information on the CYC race series can be found in Section J of the CYC Handbook. This Notice of Race (NOR) applies to the High-Water Series only. Club Regattas, Invitational Regattas and the Club Championship Fleet Race will publish their own NOR. Updated versions of this NOR will be posted on the Club web site.
- 2) Rules. The regatta will be conducted in accordance with the Racing Rules of Sailing (RRS), latest edition, and the US Sailing Prescriptions (USSP), as modified by the Sailing Instructions (SI). Full details of rules changes will be provided in the SI. This will include RRS 77, 78, 87 and 90.3, covering sail numbers, one-design equipment and scoring systems. The SI may also change other racing rules.
- 3) Eligibility. All races are open to members in good standing of Concord Yacht Club. Windsurfers are not eligible for any of these race series. Eligibility for Series and Fleet prizes may have participation requirements. These are detailed in the SI.
- 4) Registration. All CYC boats are automatically registered for the High-Water Series. No entry fees are required. Regardless of the event, all competitors should check in with the RC at the starting line before the first starting sequence is begun. All mixed-fleet racing requires assignment of a Portsmouth handicap by the CYC Handicap Committee and is a prerequisite for competition. All keelboats will race together but will be divided into spinnaker and non-spinnaker divisions for awards. The spinnaker division (default) is open to all boats. The non-spinnaker division is restricted to non-spinnaker boats. Skippers must register their preference for the entire season with the fleet captain. By entering any of these races, the owner agrees to be bound by the RRS and any other rules that govern the event.
- 5) Sailing Instructions. Sailing Instructions will be made available on the Club web site. Any modifications made less than 1 day prior to the race to which they apply will be posted on the Club bulletin board. Cumulatively updated SI will be posted on the Club web site as required.
- 6) Schedule. A detailed schedule of race dates, with start times and time limits will be posted in the Sailing Instructions. Starting times will be as follows:

High-Water Series (all boats) Sunday	First gun	2:00 pm
High-Water Series (dinghies) Wednesday	First gun	6:00 pm
- 7) Minimum conditions. A minimum of three boats in any fleet (dinghy or keelboat) and a sustained wind speed of 3 mph at the starting signal are required to constitute a race.
- 8) Courses. Races will be sailed on Fort Loudoun Lake outside CYC between mile markers 615.7 and 617.7. Courses will be windward/leeward or triangular courses at the discretion of the RC with all buoys left to port. Courses will be posted on the side of the RC boat prior to the start of each race.
- 9) Scoring. Winners of the High-Water Series will be determined using a high-point scoring system. Fleet Champions will be determined by combining the High-Water Series results with the Club Regatta results using a high-point system. The number of drops and the participation requirements for the two awards are different, as detailed in the SI.
- 10) Awards. Awards will be given for the following places: High-Water Series Dinghy (1<sup>st</sup>-3<sup>rd</sup>); High-Water Series Keelboat (1<sup>st</sup>-3<sup>rd</sup>); High-Water Series Non-Spinnaker Keelboat (1<sup>st</sup>-3<sup>rd</sup>); Dinghy Fleet Champion; Keelboat Fleet Champion.
- 11) Mark boat. A mark boat shall be on duty for moving marks and monitoring fleet safety during all High-Water Series races.

## Sailing Instructions

CYC High-Water Series  
CYC Fleet Champions

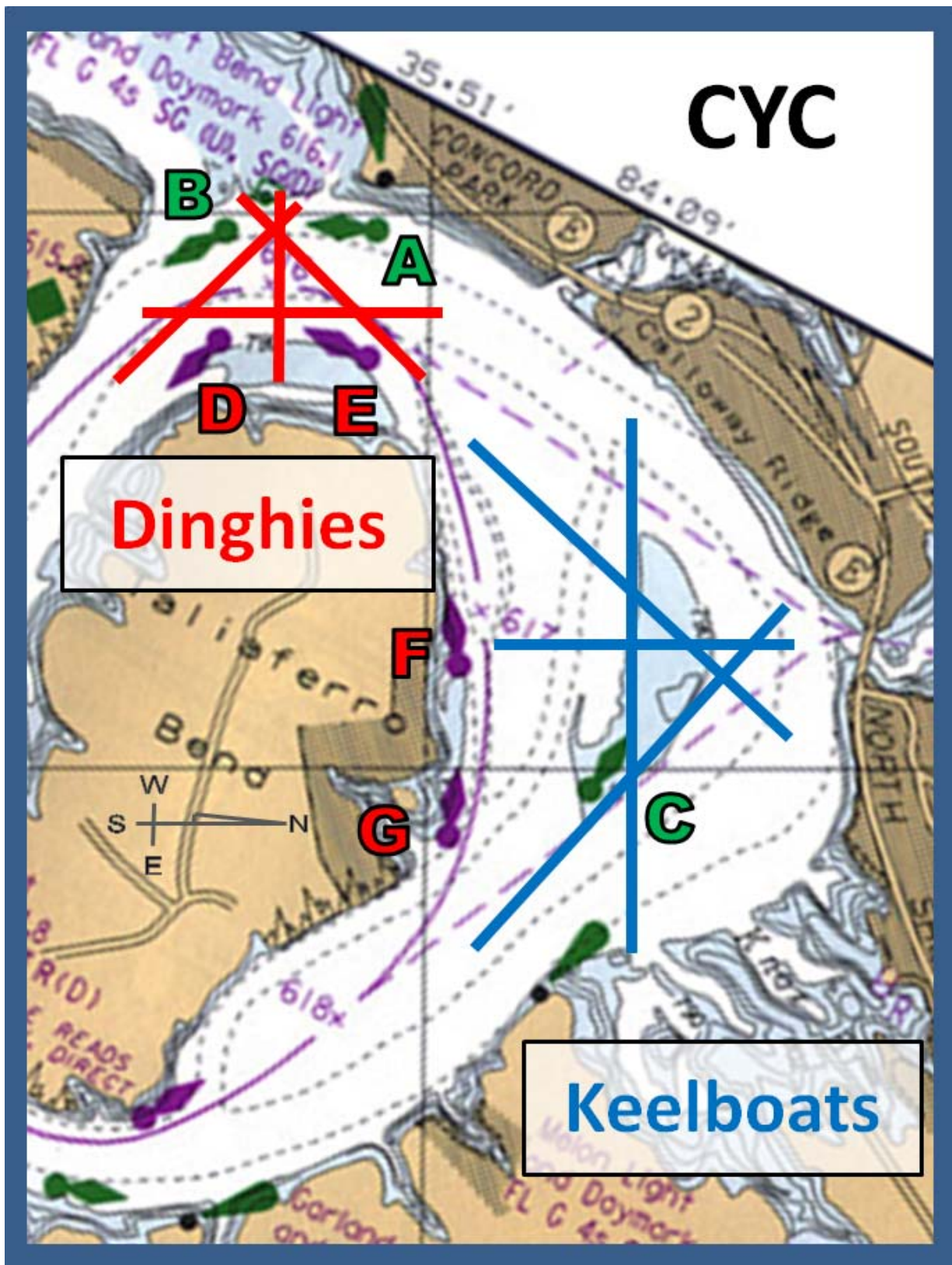
- 1) General information. General information on the CYC race series can be found in Section J of the CYC Handbook. These Sailing Instructions (SI) apply to the High-Water Series and Fleet Championships. Club Regattas, Invitational Regattas and the Club Championship Fleet Race will publish their own SI.
- 2) Rules. The regatta will be conducted in accordance with the Racing Rules of Sailing (RRS), latest edition, and US Sailing Prescriptions (USSP), as modified by these Sailing Instructions (SI).
- 3) Rules Change. Boats do not need to have class approved or matching sail numbers in order to compete, as long as the boat can be clearly identified by the RC. This modifies RRS 77, Appendix G and USSP Appendix G1.
- 4) Rules Change. Boats that do not conform to class rules for equipment do not require written permission from the class association, but they may not qualify for one-design fleet awards. They may compete for mixed-fleet awards, provided the modifications have been accounted for in their Portsmouth handicap rating by the Handicap Committee. This modifies RRS 78 and 87.
- 5) Rules Change. Scoring will depend on the race series or regatta. See notes on scoring below. This modifies RRS 90.3.
- 6) Notices and Changes. Notices to competitors and changes to the SI will be posted on the Club bulletin board if changes are made less than 1 day prior to the start of the race in which they will apply. Cumulative changes will be updated on the Club web site.
- 7) Schedule of Races. High-Water Series races are schedule on the days shown. Additional notes include Club Regatta dates and summer holidays.

Wednesday	Sunday	Additional Notes
	4/17/2011	<b>Tune Up Race</b>
4/20/2011		
4/27/2011		<b>Rocky Top Regatta (Sat/Sun Apr 30-May 1)</b>
5/4/2011	5/8/2011	
5/11/2011	5/15/2011	<b>Also Adm Farragut (Sat/Sun May 14-15)</b>
5/18/2011	5/22/2011	
5/25/2011		<b>Memorial Day Regatta (Sat/Sun May 28-29)</b>
6/1/2011	6/5/2011	
6/8/2011	6/12/2011	
6/15/2011	6/19/2011	
6/22/2011	6/26/2011	
6/29/2011		<b>July 4<sup>th</sup> Regatta (Mon July 4)</b>
		<b>No racing</b>
7/13/2011	7/17/2011	
		<b>No racing</b>
7/27/2011	7/31/2011	
		<b>No racing</b>
8/10/2011	8/14/2011	
		<b>No racing</b>

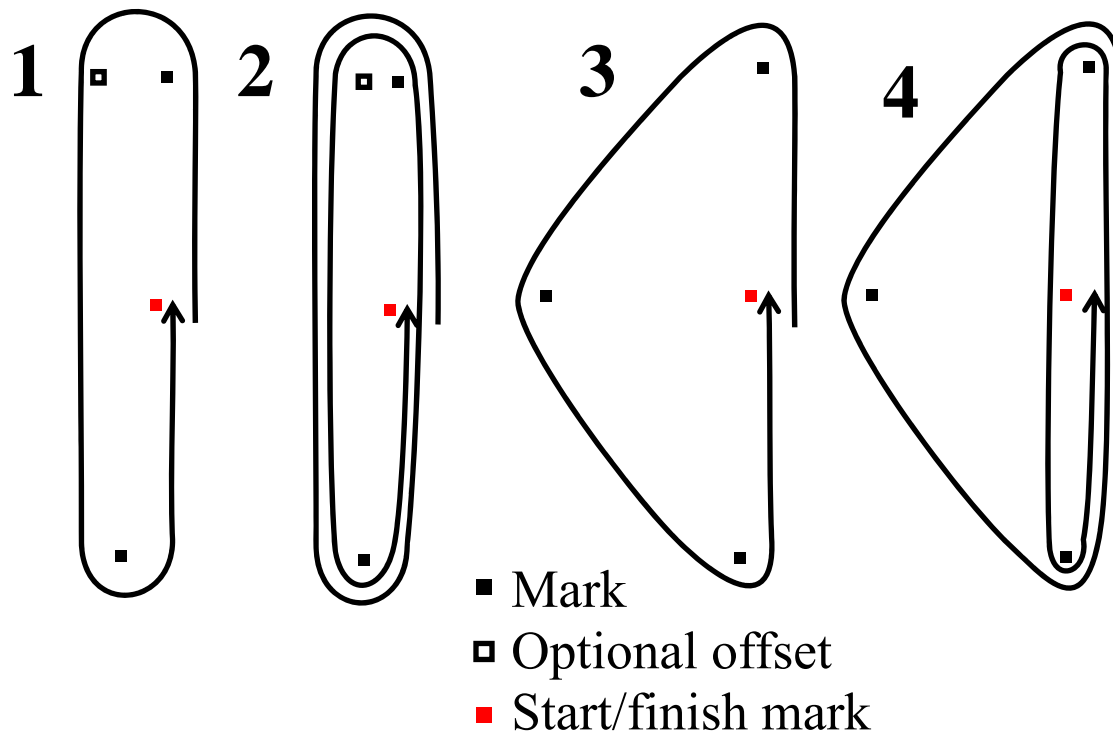
8/24/2011	8/28/2011	
		<b>Labor Day Regatta (Sun Sept 4)</b>
9/7/2011	9/11/2011	
9/14/2011	9/18/2011	
9/21/2011	9/25/2011	
9/28/2011	10/2/2011	
10/5/2011	10/9/2011	
10/12/2011	10/16/2011	
		<b>Fall Regatta (Sat/Sun Oct 22-23)</b>

- 8) Minimum conditions. A minimum of three boats in any fleet (dinghy or keelboat) and a sustained wind speed of 3 mph at the starting signal are required to constitute a race.
- 9) Check in. All competitors are expected to check in with the RC at the start of racing by sailing past the stern of the RC boat on starboard tack and announcing their sail number. A boat that retires from the race shall notify the RC as soon as possible.
- 10) Class Flags. The class flag for keelboats will be Auxiliary Fleet flag. The class flag for dinghies will be the Thistle Fleet flag.
- 11) Racing Areas. Race areas are at the discretion of the PRO. Generalized racing areas are shown in the Attachment below. The keelboat race area is in the widest part of the lake to facilitate longer legs. The starting area should be between the red nun "F" and the two bridges. The dinghy race area is immediately in front of the club. The starting area should be between the four government markers "A", "B", "D", and "E". Race areas with mixed fleets of keelboats and dinghies will be set with a preference for the majority of boats present.
- 12) Safe Harbor Area. An area west of a line from the green navigational light in front of CYC to the No Wake buoys southwest of CYC shall be designated a "Safe Harbor Area". Boats operating within this area shall operate with caution and are not bound by the RRS propulsion rules (RRS 42). Courses shall not be set so as to include this area, and competitors will avoid it while racing.
- 13) Courses. All courses will be at the discretion of the PRO and will be posted on the side of the committee boat. Race courses will be set with an initial windward leg and will be triangles or windward/leeward (with or without offset) or some other configuration as described at the Competitors' Meeting. Marks will preferably be left buoys to port. The course may be more than once around.
- 14) Marks. Marks will be a combination of inflatables and government markers. Government markers are designated A-G as shown in Attachment A. Inflatable marks are designated W (windward), L (leeward), O (offset), Δ (triangle) and X (finish).
- 15) Start/Finish. Races will be started using Rule 26. Start and finish will be between the X mark and the main mast of the RC boat.
- 16) Time Limits. If no boat has passed the first mark within 45 minutes, the race will be abandoned. If no boat finishes the course within 2 hours, the race will be abandoned. Any boat failing to finish within 30 minutes of the first boat in its fleet will be scored DNF without a hearing. In level fleet racing, the PRO may opt to score the boat in last place rather than DNF. This changes rules 35, A4 and A5.
- 17) Commercial Traffic. Large commercial traffic on the water (barges) will be treated according to the International Regulations for Preventing Collisions at Sea. In the event that commercial traffic passes through the race course during a race, that race may be abandoned at the discretion of the PRO.

- 18) Protests. Protests must be registered with the PRO within 30 minutes after the RC boat returns to the dock at the end of the day. Paperwork must be filed with the 2<sup>nd</sup> Vice Commodore within 24hrs. A hearing will be scheduled within 1 week (modifies RRS 61.3).~~The protest time limit is 60 minutes after the RC boat returns to the dock at the end of the day.~~
- 19) Scoring – High-Water Series. Positions in each race will be determined using the Portsmouth handicap system as administered by the CYC Handicap Committee. Points for each race will be awarded using the CHIPS high point system (modifies RRS 90.3). A minimum of one race constitutes a series. Each skipper's or boat's best 60% of races run will count for the series score. Series scores are assigned by boat for keelboats (regardless of skipper) and by skipper for dinghies (regardless of boat). Keelboats will be scored together as a fleet for the purposes of determining points in each race.
- 20) Scoring – Fleet Champions. A combined score from all High-Water Series races and all Club Regattas will be used to determine a Club Dinghy Champion and a Club Keelboat Champion. Points for each race will be awarded using the CHIPS high point system (modifies RRS 90.3). A minimum of one race constitutes a series. All races count towards the final score.
- 21) To qualify for Fleet Champion a competitor must compete in 50% of the Club Regatta events (not 50% of the races). Due to the limited number of Club Regatta events, competition in one event (as skipper or crew) may be applied to both Fleets for the purpose of eligibility, but the finishing score will only apply to the Fleet in which they sailed the event. Points in the other Fleet will be awarded at the end of the year equal to the boat's/skipper's series points average of races sailed.
- 22) Scoring – Race Committee. RC Duty participation counts as race participation for series scoring purposes. Points will be awarded at the end of the year for RC Duty equal to the boat's/skipper's series points average of races sailed.
- 23) Awards. Awards will be given for the following places listed below. Awards will be made to the top three spinnaker and top three non-spinnaker keelboats based on their final standing in the combined fleet. One-design fleets may offer additional prizes at their discretion.
  - High-Water Series (dinghy) places 1-3
  - High-Water Series (keelboat, spinnaker) places 1-3
  - High-Water Series (keelboat, non-spinnaker) places 1-3
  - Fleet Champion (dinghy)
  - Fleet Champion (keelboat)
- 24) Disclaimer. Competitors participate in the racing entirely at their own risk. See RRS 4, Decision to Race. CYC will not accept any liability for material damage or personal injury or death sustained in conjunction with or prior to, during or after the racing.



General CYC Race Areas for dinghies (red) and keelboats (blue). Government marks are labeled ABC (green cans) and DEFG (red nuns). Inflatable marks may also be used.



Potential race course configurations. Other courses may be used to accommodate fleet or wind conditions as described at the Competitor's Meeting.

- 1) Windward-Leeward, W-L-X (or W-O-L-X if offset is used)
- 2) Twice Around, W-L-2-X (or W-O-L-2-X if offset is used)
- 3) Triangle,  $\Delta$ -X (or a-b-c-X if gov't marks are used)
- 4) Gold-Cup,  $\Delta$ -W-L-X